

NSW CUSTODY STATISTICS

December 2023



YOUTH DETENTION POPULATION

170

in December 2022

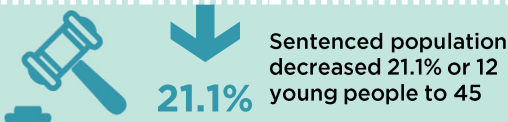
174

in December 2023



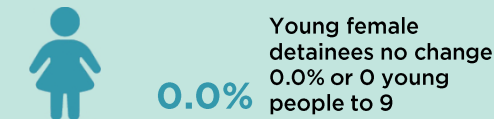
CUSTODY STATUS

Between December 2022 and December 2023



GENDER

Between December 2022 and December 2023



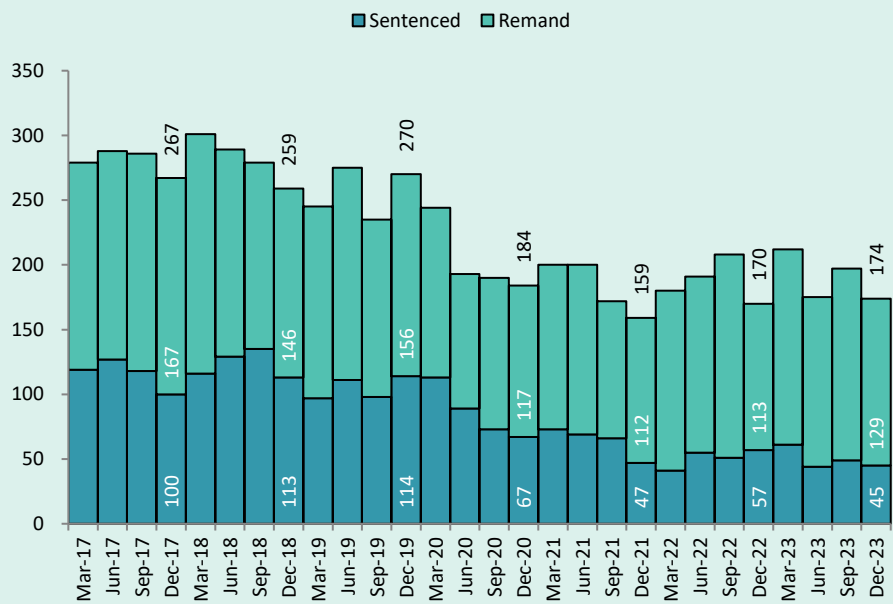
ABORIGINAL OVER-REPRESENTATION



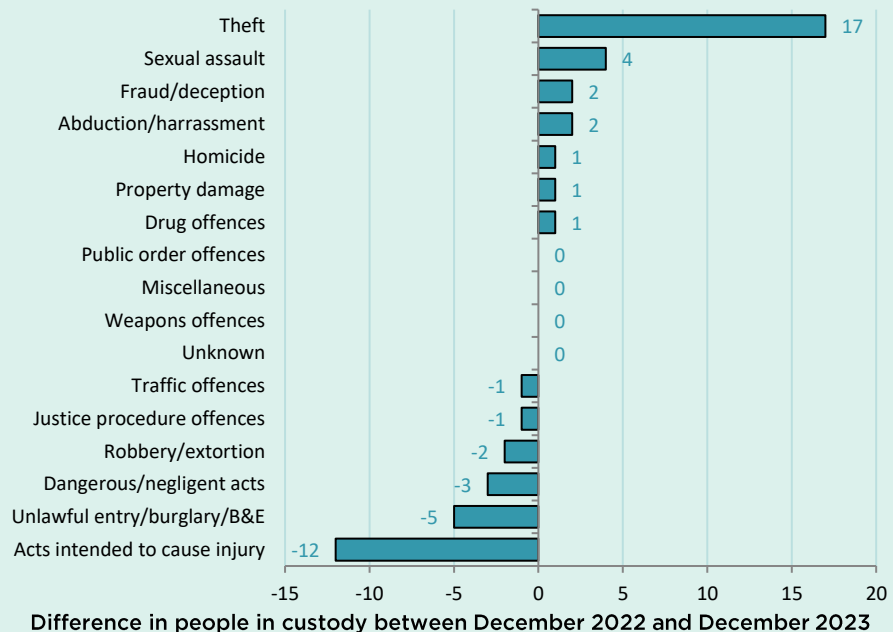
Between December 2022 and December 2023



QUARTERLY TRENDS



CHANGE IN YOUTH CUSTODY BY OFFENCE



NSW CUSTODY STATISTICS

December 2023

PRISON POPULATION

12,247 **12,091**

in December 2022

in December 2023



LEGAL STATUS

Between December 2022 and December 2023



9.2%

Remand population increased 9.2% or 426 people to 5,055



7.6%

Sentenced population decreased 7.6% or 582 people to 7,036

GENDER

Between December 2022 and December 2023



7.1%

Female custody population decreased 7.1% or 59 people to 768



0.8%

Male custody population decreased 0.8% or 97 people to 11,323

ABORIGINAL OVER-REPRESENTATION*

In Dec 2022

29.6%

of prisoners were Aboriginal

In Dec 2023

30.4%

of prisoners were Aboriginal

Between December 2022 and December 2023



1.3%

Aboriginal female custody population decreased 1.3% or 4 people to 312

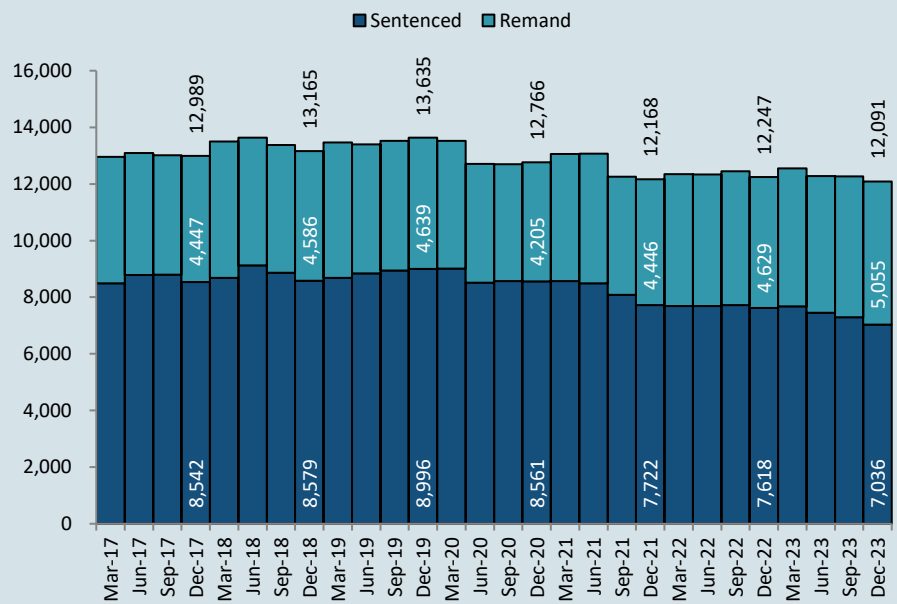


1.8%

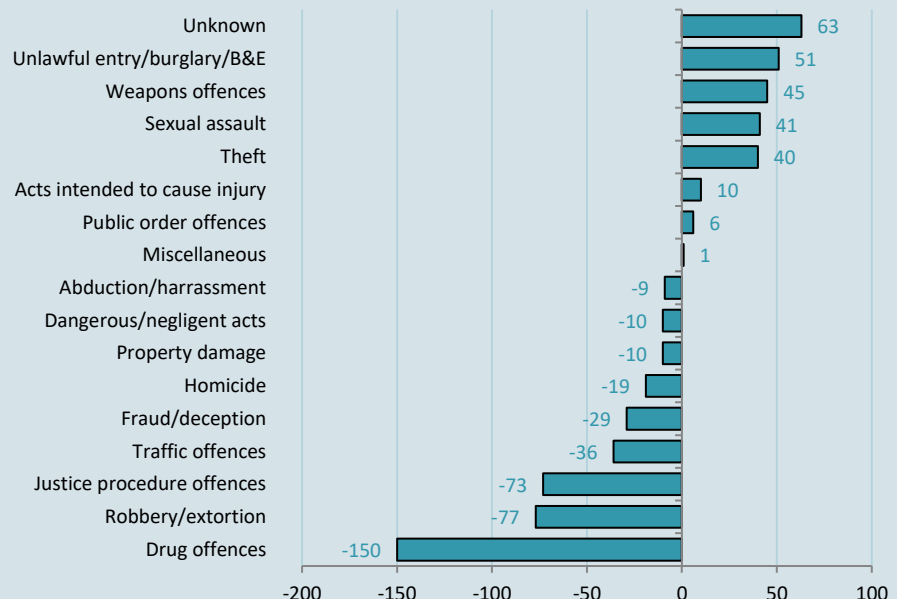
Aboriginal male custody population increased 1.8% or 59 people to 3,362

*Due to delays in identification of Aboriginal status the number of Aboriginal persons in adult custody is potentially undercounted by up to 2% in more recent months.

QUARTERLY TRENDS



CHANGE IN PRISON NUMBERS BY OFFENCE



Difference in people in custody between December 2022 and December 2023

